

## Technical Specifications

Brand	WINGER 3 200 WB	WINGER 3 488 WB
Model	3 200	3 488
Seating Capacity	13 + D AC, 18 + D NAC	20 + A + D NAC & AC
Engine Type	TATA DICOR 2.2 L BS6 RDE, Diesel	TATA DICOR 2.2 L BS6 RDE, Diesel
Power	75 kW @ 3 750 r/min	75 kW @ 3 750 r/min
Torque	200 Nm @ 1 250 - 3 500 r/min	200 Nm @ 1 250 - 3 500 r/min
Gearbox	Tata Winger Gearbox (TA-70) -5F/1R, Synchronesh on all gears	Tata Winger Gearbox (TA-70) -5F/1R, Synchronesh on all gears
Front Axle	Independent Stub Axle with CV Shaft arrangement	Independent Stub Axle with CV Shaft arrangement
Rear Axle	Rigid / Dead Type	Rigid / Dead Type
Steering	Power Steering Rack and Pinion	Power Steering Rack and Pinion
Battery	12 V, 80 Ah	12 V, 80 Ah
Alternator Capacity	150 A	150 A
Front Brakes	Disc Brakes with Twin Pot Calliper	Disc Brakes with Twin Pot Calliper
Rear Brakes	Drum Brakes with ABS	Drum Brakes with ABS
Brake Type	Hydraulic Brakes with Vacuum Booster	Hydraulic Brakes with Vacuum Booster
Front Suspension	McPherson Strut with Coil Spring, Wishbone Type	McPherson Strut with Coil Spring, Wishbone Type
Rear Suspension	Parabolic Leaf Springs, with Hydraulic double acting telescopic type shock absorber	Parabolic Leaf Springs, with Hydraulic double acting telescopic type shock absorber
DEF Tank Capacity	16 l	16 l
Fuel Tank Capacity	60 l	60 l
Tyre Size	195 R 15 LT, 8PR	195 R 15 LT, 8PR
Turning Radius (TCD)	12 800 mm	13 600 mm
Wheelbase	3 200 mm	3 488 mm
Overall Length	4 940 mm	5 478 mm
Overall Width	1 905 mm	1 905 mm
Overall Height	2 110 mm	2 490 mm NAC & 2 670 mm AC
Engine Displacement	2 179 cc	2 179 cc
BS6 Technology	DOC+DPF+SCR	DOC+DPF+SCR

Available in both AC and Non-AC variants | Available in both High Roof & Flat Roof models

**TATA MOTORS**

For more information, visit

[www.winger-tatamotors.com](http://www.winger-tatamotors.com) | **1800 209 7979**

You can also contact our Sales Office: Tata Motors Limited, 4th Floor, Ahura Centre, 82, Mahakali Caves Road, MIDC, Andheri (East), Mumbai - 400 093.

All pictures shown are for illustration purpose only. Actual product may vary. CAUTION: Accessories shown in the picture or elsewhere do not constitute standard fitment. The specifications are merely indicative. Due to continuous product improvements, these specifications are liable to change without notice.



**Widest Service Network**



**Tata Genuine Parts**  
in every location



Best-in-class  
**RESALE** Value



Assured Quality Repairs  
within 15 days\*



24-hour Vehicle  
Restoration Program



\* Standard warranty, terms and conditions apply.



**TATA MOTORS**  
Connecting Aspirations

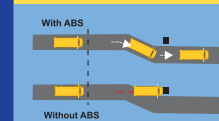


## Making School Travel Safer

Presenting Tata Winger Range of School Vans



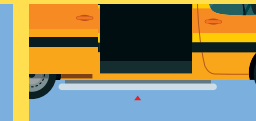
**BS6 P2**  
Phase 2 Ready



Anti Lock  
Braking System



Anti-Roll Bar



Side Foot Step



Chin Guard on  
Seat Back, with  
additional foam



Fire Detection and  
Suppression System

**TATA WINGER**  
SCHOOL

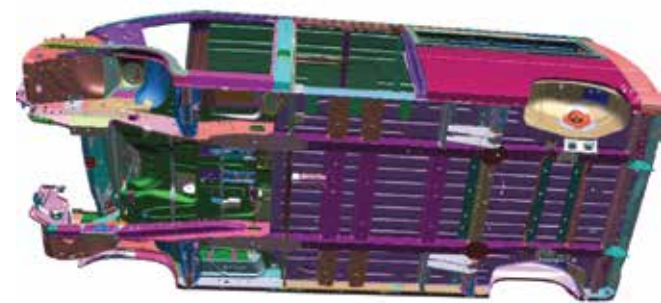


### Best-in-class mileage TATA DICOR 2.2 L BS6 Engine



### Power of Performance

- Well Proven TATA DICOR 2.2 L BS6 Ph2 Engine
- Power 75 kW @ 3 750 r/min Torque 200 Nm @ 1 250 - 3 500 r/min



Monocoque Body Structure



McPherson Strut

### Power of Comfort - Passenger & Driver



- McPherson Strut coil spring with wishbone type suspension
- Monocoque Body Structure - Car like comfort



### Power of Style & Design

- Premium Tough design philosophy with New Chrome plated Trust Bar with Tata Logo
- Integrated wrap-around DRL with Full LED technology



### Power of Profit



- Best-in-Class - Fuel Efficiency in Vans for higher profits
- Dual Mode Eco Switch - gives efficient engine management for higher fuel efficiency



### Power of Convenience & Connectivity



- TATA Fleet Edge - Fleet Management System
- Fuel Consumption & Fuel Theft Monitoring and Vehicle Master and Reminders



Real time fuel consumption view & analysis



Analytical Reports

### Power of Value



- TATA Sampoorna Seva 2.0
- Winger Promise 2.0



## Value Enhancers BS6 P2

### Winger RDE Additional Features & Advantages



**Deeper Gear Ratio**  
Improved driveability and gradeability



**Low Drag Calliper**  
Reduced brake drag for higher mileage



**Torque Based GSA**  
Better gear shift assist for higher mileage



**Chin Guard On School Van**  
Safety in case of a forward jerk



**Improved External & Internal Connectivity**  
TCU Connectivity, FOTA Features: 4G SIM and USB socket

